



ECS Lunch and Learn

Supporting internal knowledge transfer within TRCA

November 1, 2022

The work of TRCA's Planning Policy and Regulation Team: a TRCA team effort

Presented by: Mary-Ann Burns, Senior Manager
Provincial and Regional Policy

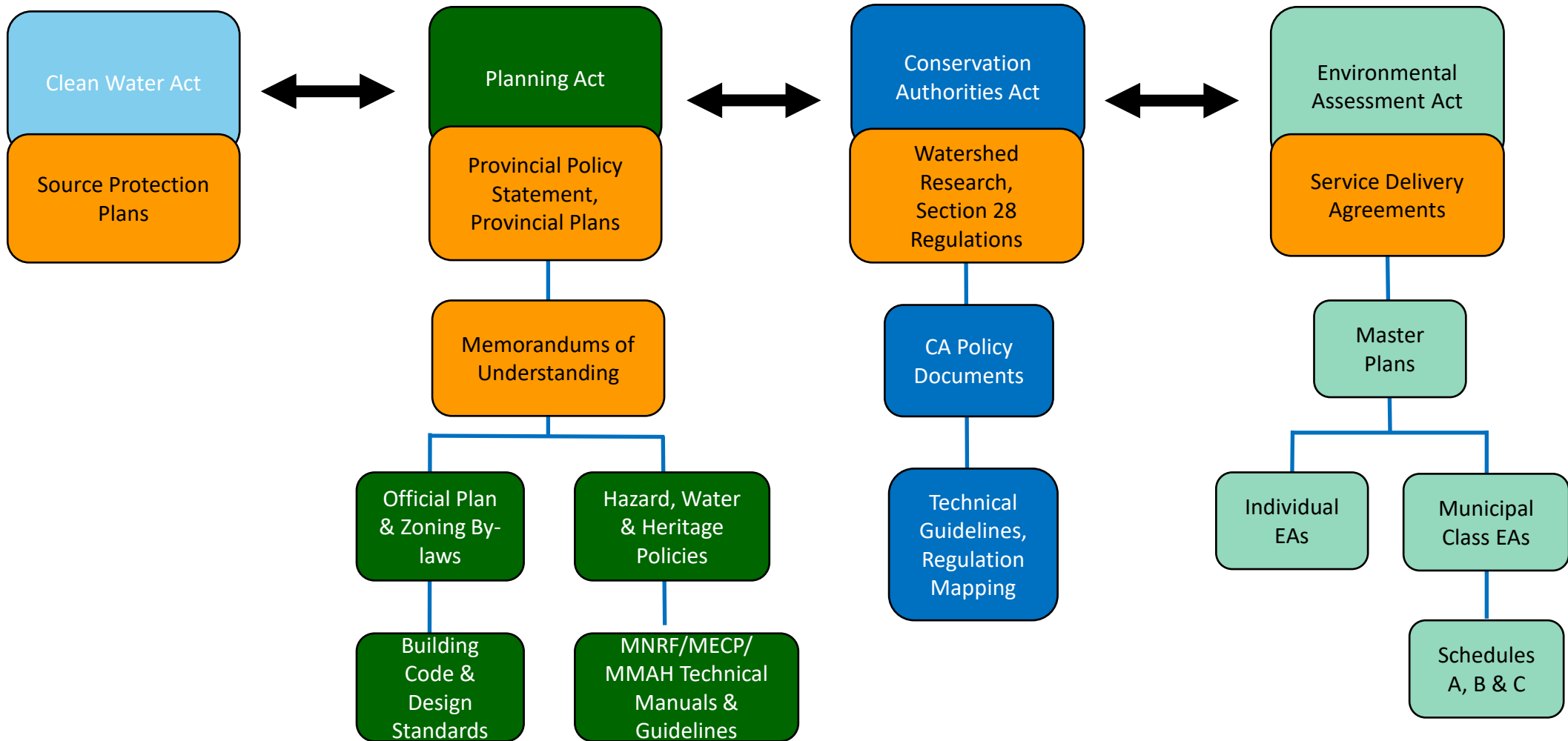
November 1, 2022

Outline

- TRCA Roles in the Planning and Permitting processes
 - Legislative framework and s.28 Regulation
- The Living City Policies
- PPR team - work overview
- Consultations: provincial, municipal, federal and TRCA initiatives
- Commenting 101/Tips
- Q & A

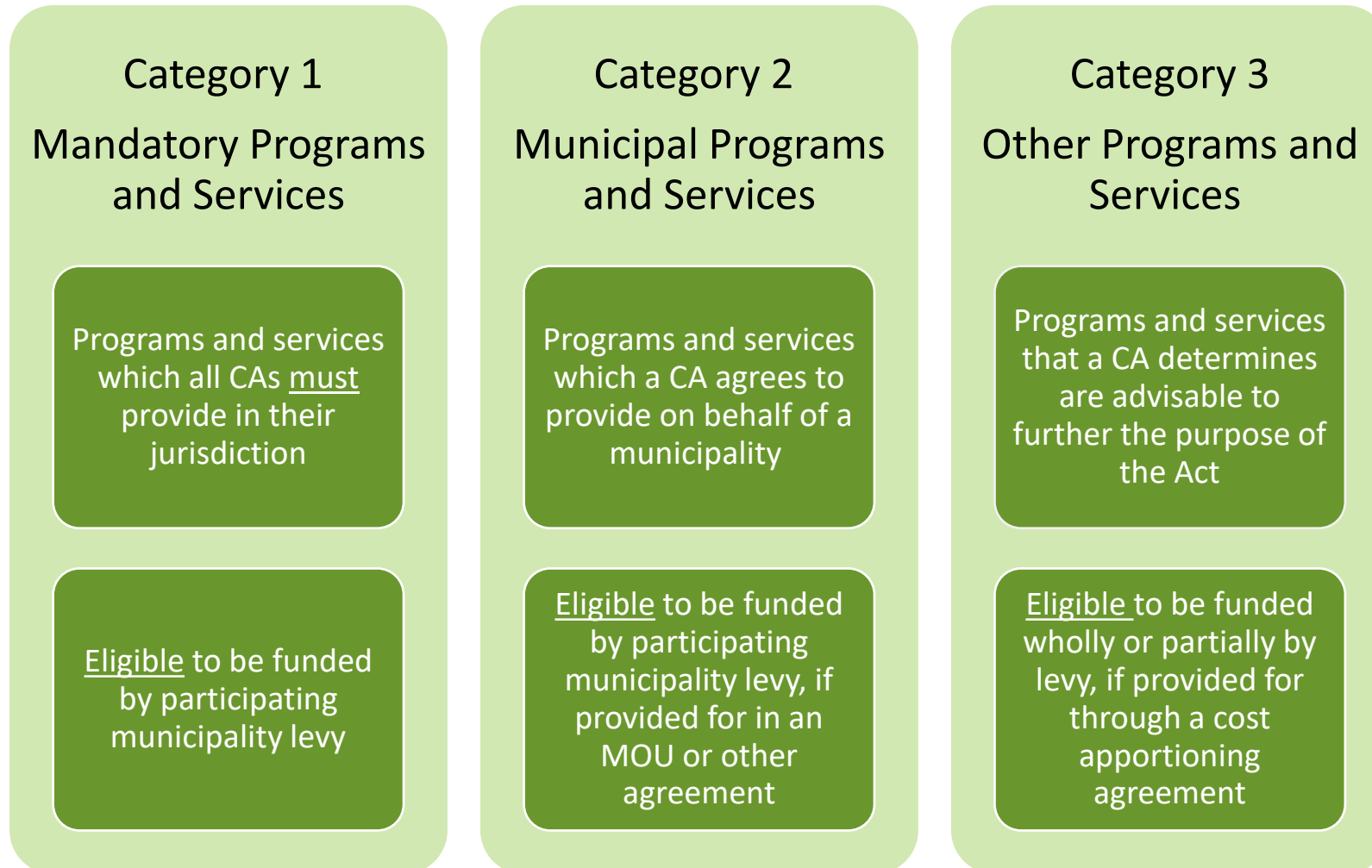


CA Roles and Legislative Framework



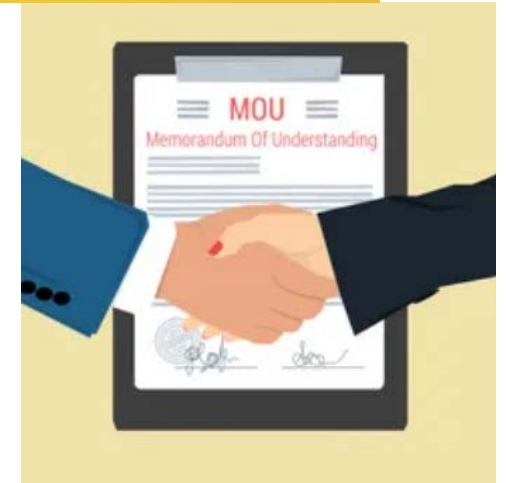
Conservation Authority Programs and Services

(Sections 21.1, 21.1.1, and 21.1.2 of the Act)



Category 1 Mandatory Programs & Services (O. Reg. 686/21)

- Risks of Natural Hazards
- Conservation and Management of Lands
- Source Protection Authority under the *Clean Water Act, 2006*
- *Lake Simcoe Protection Act, 2008* (Lake Simcoe Region Conservation Authority)
- Other legislation as may be prescribed
- Prescribed in Regulation:
 - provincial groundwater monitoring program
 - provincial stream monitoring program
 - development and implementation of a watershed-based resource management strategy
- (Note: Category 2&3 TRCA - Municipal MOU process well underway)



Conservation Authority Roles

BILL 23

Watershed Based
Resource Management
Agency

Regulatory
Authority

Delegated Provincial
Interest for Natural
Hazard Policies in 3.1 PPS
(MMAH/MNRF/CO MOU)

Service Provider -
Planning and Other
Technical Advisory
Services

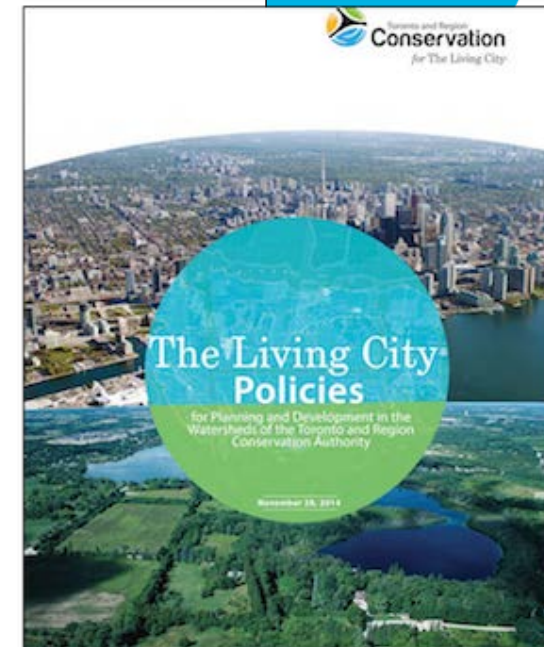
Public Commenting Body
under the *Planning Act*

Landowner

Source Protection
Authority under the
Clean Water Act

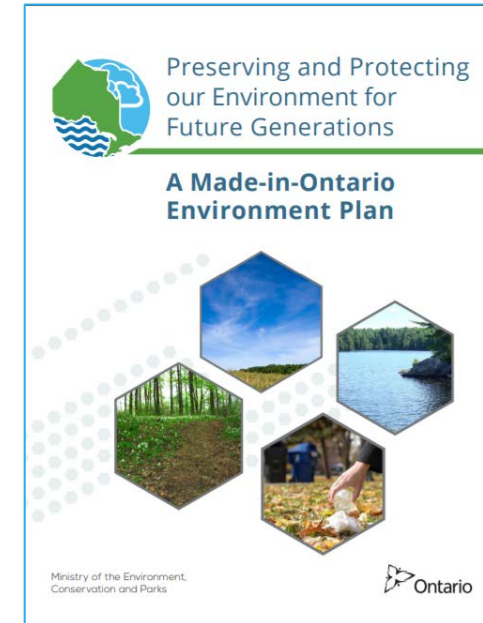
Provincial Policy
Statement, 2020

Under the *Planning Act*



CAs' Mandate for Natural Resource Management

- CA Act s. 0.1: *The purpose of this Act is to provide for the organization and delivery of programs and services that further the conservation, restoration, development and management of natural resources in watersheds in Ontario.*
- Ontario Environment Plan: *Work in collaboration with municipalities and stakeholders to ensure that conservation authorities focus and deliver on their core mandate of protecting people and property from flooding and other natural hazards and conserving natural resources.*



Conservation Authorities Act	
R.S.O. 1990, CHAPTER C.27	
Consolidation Period: From October 1, 2021 to the present	
Last amendment: 2021, c. 4, Sched. 6, s. 39.	
Legislative History: (1 - 7)	
CONTENTS (1 - 7)	
PART I	
PURPOSE AND INTERPRETATION	
0.1	Purpose
1	Definitions
1.1	Working original in French rights
PART II	
ESTABLISHMENT OF CONSERVATION AUTHORITIES	
2	Meeting to establish authority for watershed
3	Establishment, jurisdiction and role of authority
4	Upper-tier municipalities
5	Towns and Region Conservation Authority
6	Hamilton Region Conservation Authority
7	Great River Conservation Authority
8	Grouping of municipalities
9	Establishment of authority for less or more watersheds
PART III	
ENLARGING AREAS OF JURISDICTION, AMENDATIONS AND DISSOLUTIONS	
10	Amendment of authority's area
11	Amalgamation of authorities
12	Participating municipalities leaving association, etc.
13	Dissolution of authority
PART IV	
MEMBERSHIP AND GOVERNANCE	
14	Members of authority
15	Meetings of authority
16	Decision-making at meetings
17	Chair, vice-chair
18	Employees and advisory boards
19	Executive committee
19.1	By-laws
PART V	
OBJECTS, POWERS AND DUTIES	
20	Objects

TRCA's Ontario Regulation 166/06, as amended: Development, Interference with Wetlands and Alterations to Shorelines and Watercourses Regulation

Requires permission from TRCA for:

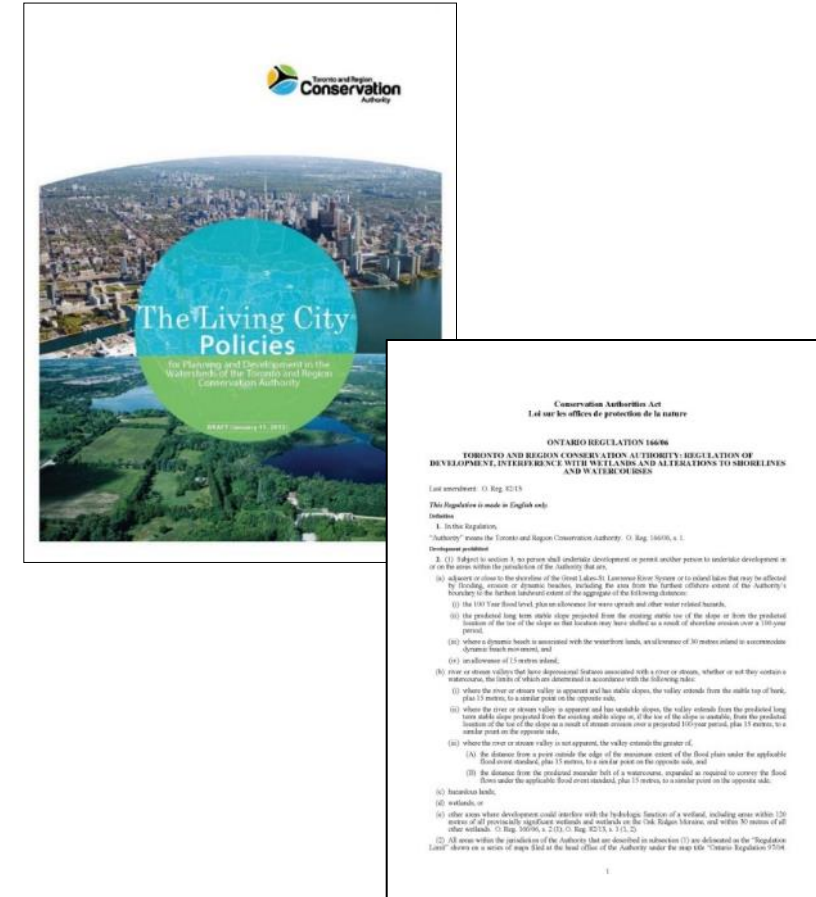
- **Development** in or adjacent to valley and stream corridors, Lake Ontario shoreline, watercourses, hazardous lands and wetlands
- **Straightening, changing, diverting or interfering** in any way with an existing channel of a watercourse
- **Changing or interfering** in any way with a wetland

Development means:

- Construction, reconstruction, erection or placing of a building or structure;
- Altering the use or potential use of the building or structure
- Increasing the size of the building or structure or the number of dwelling units in the building or structure;
- Site grading; or
- Placing, dumping or removal of any material, originating on the site or elsewhere.

TRCA Policy Document and TRCA Regulation (Ontario Regulation 166/06)

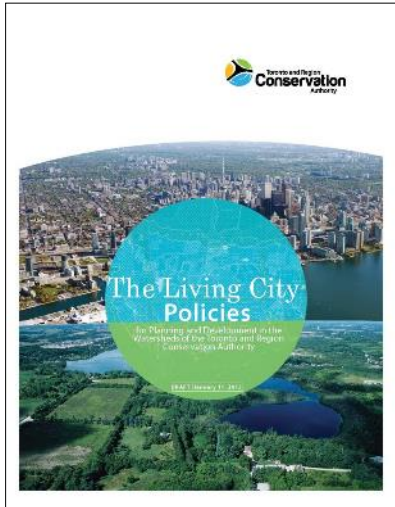
- Regulation tests: control of flooding, erosion, dynamic beaches, pollution or the conservation of land will not be affected
- CA Regulation is “applicable law” under *Building Code Act*
- Regulation requirements “flagged” in the Planning and Environmental Assessment processes
- CA Permits for development through an MZO must be issued



Developing The Living City Policies was a TRCA team effort



Implementing TRCA's Main Policy Document for Planning and Permitting



1. Introduction
 2. The Toronto Region
 3. *Legislative Foundation* 🤔
 4. TRCA History & Evolution to The Living City
 5. The Living City - Principles
 6. Paths to Achieving The Living City: Policies for Sustainable Communities
 7. Policies for Environmental Planning
 8. Regulation Policies
- Glossary, Maps and Figures

Key LCP Principles

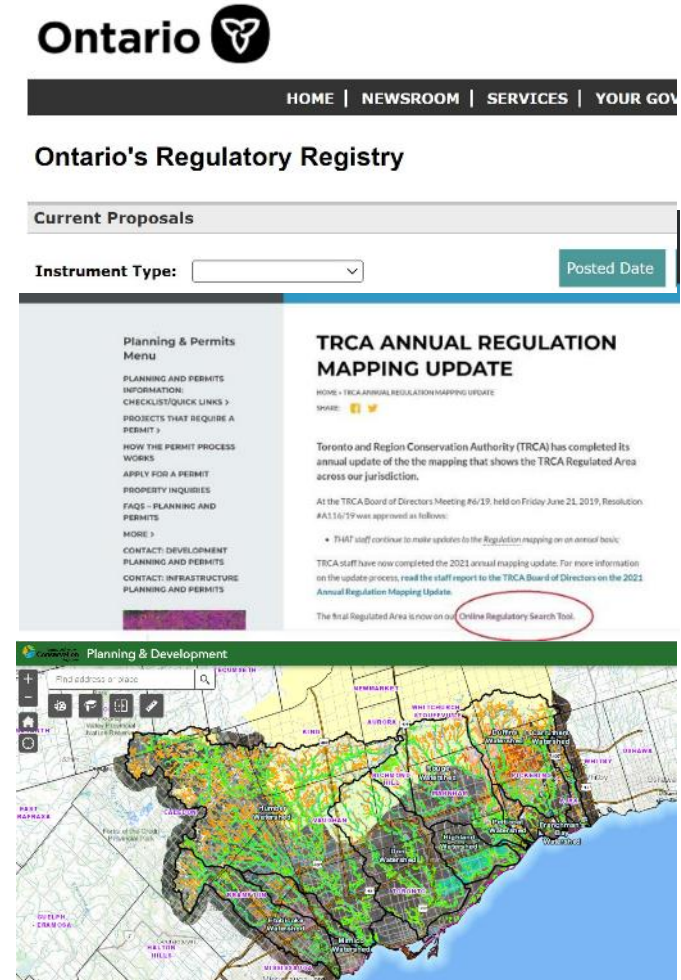
- safe, healthy, sustainable communities require a robust NHS
- watershed view, cumulative effects, adaptive management

Main LCP Objectives

- avoid, reduce risk
- mitigation hierarchy
- Protect and restore
- Natural and built environment interface
- Work with partners to address climate change

PPR Team is here to help!

- **Create, interpret, apply, and influence** planning policy and implementation tools based on the best science and environmental expertise
- **Respond** to changing federal, provincial and municipal legislation, policy and initiatives
- **Support** municipal planning processes and watershed planning with science, policy input and technical guidance
- **Facilitate** coordinated generation and sharing of new science and knowledge in support of TRCA and municipal partners' goals
- **Update and maintain** TRCA's mapping tool



PPR work is working with you!

Coordinate Annual Reg Mapping Updates with GIS, PE, WRE, DPP, IPP and WPPR

Update P&D Procedural Manual and support TRCA technical guideline updates

Provide policy, regulation and reg mapping interpretation to planning staff

Support DES, Watershed Planning and Restoration & Infrastructure initiatives (e.g., W/S Plg, FRM Comm., S/L Hazard Update)

NHS and WRS, SWH mapping updates

CTC Source Protection Plan interpretation and municipal implementation, with TRCA Hydro-G, GIS staff, and CLOCA and CVC staff

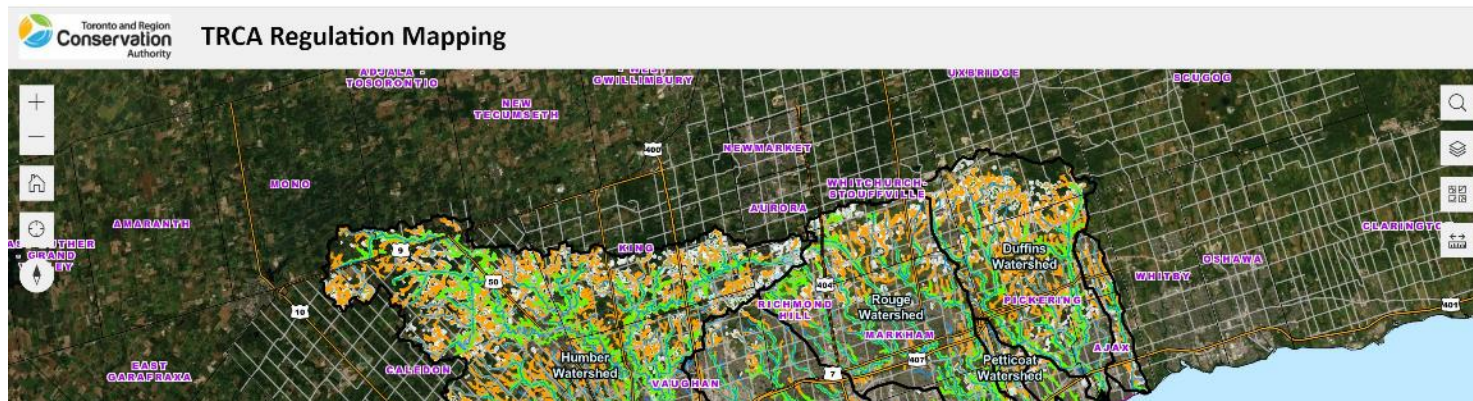
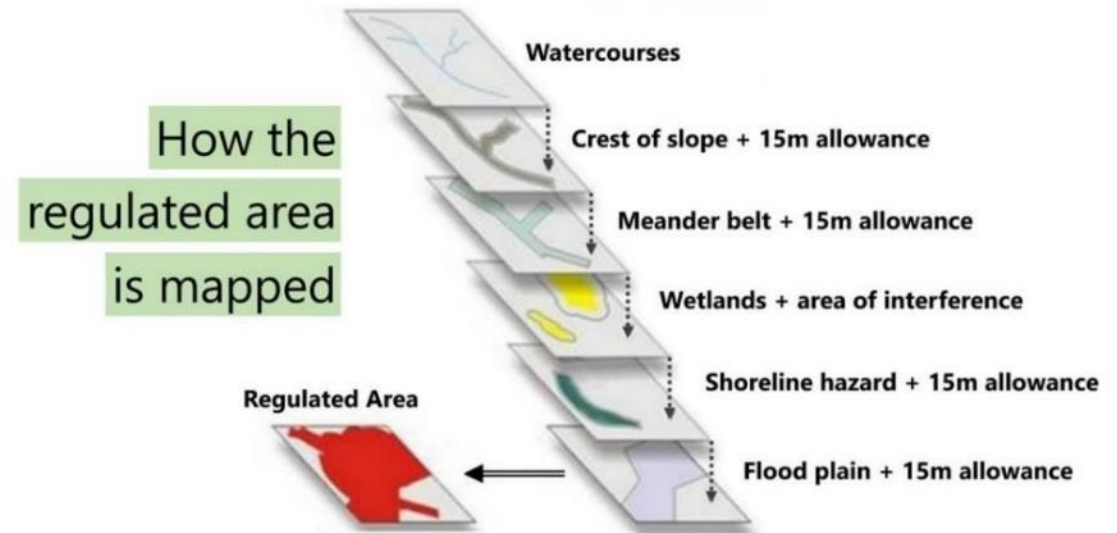
Solicitor and Realtor Inquiries (SRI) to law firms and realtors – DPP, IPP, PE, Enforcement

Municipal, provincial (ERO) and federal participation in policy consultations, including working groups and committees

Annual Regulation Mapping Updates

What is TRCA regulation mapping?

- TRCA's regulation mapping shows the areas within our jurisdiction that are likely to be subject to the Regulation.
- TRCA, municipalities, and the public can use the mapping to determine where a permit from TRCA may be required.
- PPR team works with GIS staff to distribute regulation limit data for municipal screening
- Municipalities also use regulation criteria layers mapping to inform their own mapping in OPs and ZBLs.



A feature/hazard doesn't have to be mapped to be regulated

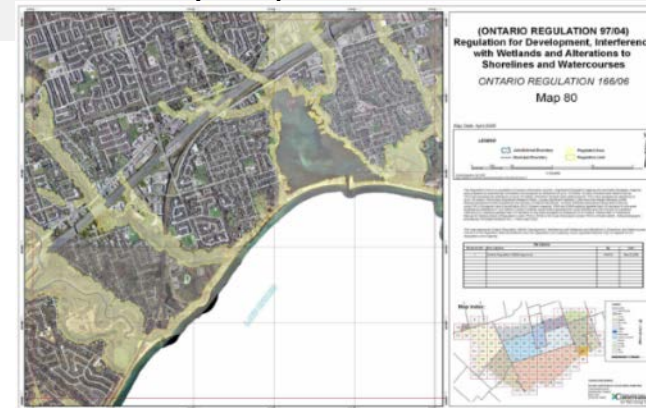
TRCA Regulation Text

- Prescribes the areas to be regulated
- Approved by MNRF
- **Prevails in case of conflict between the text and mapping**



TRCA Regulation Mapping

- Visual representation of regulated areas; does not represent a development limit
- Screening tool for implementation
- May not capture all regulated features and hazards
- Updates not subject to Ministerial approval
- Not a statutory map



SRI - Flagging TRCA regulated areas in land transactions

- Solicitor and Realtor inquiries service is available to assist potential buyers and sellers regarding TRCA's regulation limits, applicable policy, and any active violations.
- Desktop exercise using TRCA map viewer, in consultation with DPP and enforcement staff. Not a development approval.
- Due diligence exercise; legal implications, so accuracy and service delivery timelines are important
- For development or violation related information/inquiry, we provide DPP or enforcement staff contact info

PROPERTY INQUIRIES

HOME » PLANNING & PERMITS » PROPERTY INQUIRIES

SHARE: [f](#) [t](#)

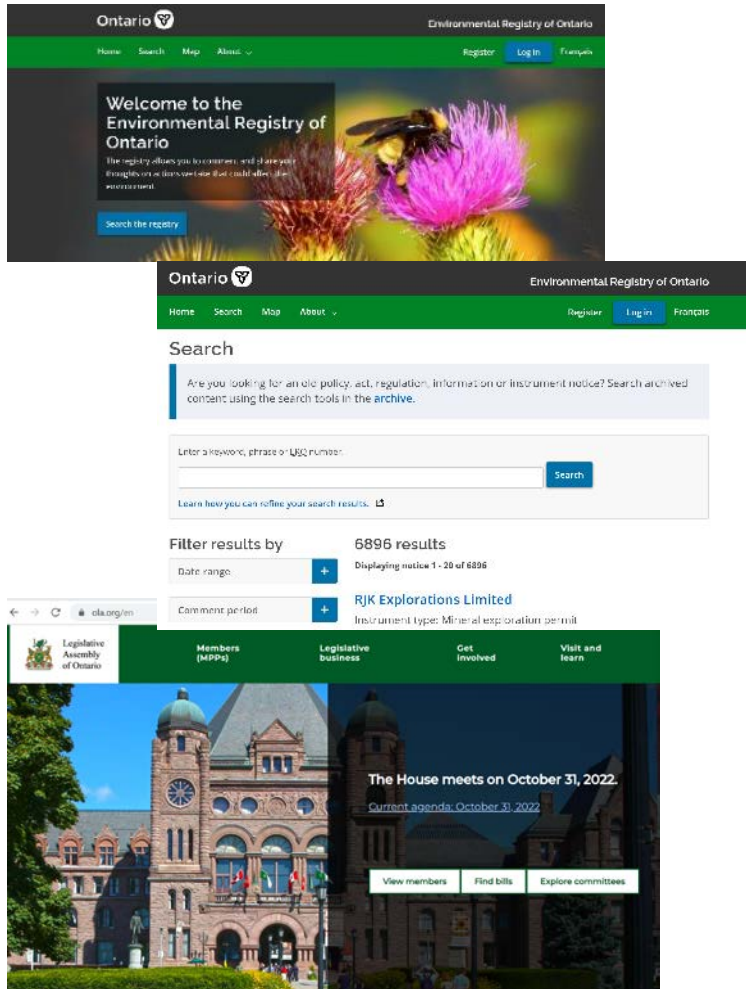
Toronto and Region Conservation Authority (TRCA) provides services to clients who are interested in buying or selling property and need answers to one of these questions:

- How do I find out if the property is affected by TRCA's regulations?
- If the property is regulated, how do I find out what I can build on it?



1. ☐ The subject property is within TRCA's jurisdiction but appears to be located outside the area regulated by TRCA. A permit under Ontario Regulation 166/06 is therefore not required for development on the subject property.
2. ☐ The subject property is **partially/entirely** regulated by TRCA and the following stipulations apply:
 - a. ☐ In accordance with Ontario Regulation 166/06, a permit is required for the following works:
 - the construction, reconstruction, erection, or placing of a building or structure of any [kind](#);
 - a change to a building or structure that would have the effect of altering its use or potential use or increasing the number of its dwelling [units](#);
 - site [grading](#);
 - the temporary or permanent placing, dumping or removal of any material, originating on the site or elsewhere; and/or
 - the interference with or alteration to a wetland, shoreline, or watercourse.Permit applications are subject to TRCA's policies and a decision by TRCA's Executive Committee. Please be advised that permits issued to previous owners and/or under previous Regulations are non-transferable. If development is contemplated, discussion with TRCA staff is recommended.
 - b. ☐ The subject property is **partially/entirely** located within a Regulatory Flood Plain and could be subject to flooding from time to time. Please be advised that new development is generally not permitted within the flood plain.
 - c. ☐ The subject property is **partially/entirely** within a Regulatory Flood Plain that has been designated a Special Policy Area (SPA) by the [Province](#). Under the SPA designation, development may be permitted subject to meeting the provisions of the site-specific SPA policies and the implementation of satisfactory flood protection measures and the issuance of permits under Ontario Regulation 166/06. However, please note that, as stated in the Provincial Policy Statement, these flood prone areas are not intended for new or intensified development and site [alteration](#), if a community has feasible opportunities for development outside of the flood plain. In this regard, applications proposing intensification of development within an SPA may require special study, as well as approval from the Ministers of Municipal Affairs and Natural Resources & Forestry.
 - d. ☐ The subject property is **partially/entirely** within a potential erosion hazard associated with a valley corridor.

Provincial Bills & ERO Postings Review



- Searchable database that notifies the public about the Ontario government's environmentally significant proposals and decisions
- Ministry making the proposal must review all comments received and include a brief explanation of the effect of these comments on the final decision
- Lately, typical commenting period from 30 to 45 days
- Commenting period for legislative process much shorter; Ontario Legislative Assembly lists gov't Bills
- PPR team monitors these sites for proposals affecting TRCA interests from a planning perspective

Provincial & Federal Consultations



- MECP EROs (Endangered Species, Sub W/S Plg Guide, SWM Manual)
- MMAH EROs (Updates to PPS, Growth Plan)
- MNRF (Invasive Species, Dams)
- Ontario Regulatory Registry (Ontario Building Code – exempting sheds)
- Ontario Legislative Assembly (Bill 23, Bill 109, Bill 229, Bill 139)



- Environment and Climate Change Canada - Canada Water Agency
- Natural Resources Canada - Ontario Chapter Climate Change Assessment
- Fisheries and Oceans (DFO) - Class works regulation for aquatic habitat restoration and shoreline stabilization

Comprehensive Reviews – Municipal Planning Documents

- Municipal planning documents like Official Plans must conform and keep current with changing provincial legislation and policy
- Partner municipalities engage TRCA in their review and amendment of Official Plans, Zoning By-laws, etc.
- PPR team coordinates TRCA staff input and drafts responses to provide science-based advice to municipalities on their efforts to address natural hazards, natural heritage, water resources, climate change mitigation and adaptation, etc.
- Examples include Municipal Comprehensive Reviews, Settlement Area Boundary Expansions, NHS/WRS Mapping (OPs), Regulation mapping (Zoning), Special Policy Area Reviews, Bill 109 OPAs, etc.



OFFICIAL PLANS

SPA Reviews ongoing:
Mississauga (Dundas)
Caledon (Bolton)
Markham (Unionville)

Completed:
York Region
Peel Region
Toronto



Under review:
Durham
Mississauga
Caledon
Brampton
Richmond Hill
Aurora



ZONING BY-LAWS

Completed:
Vaughan (under appeal at OLT)
King Rural ZBL
Markham – first draft
Pickering – first draft



TRCA Projects - Review and Consultations



PPR staff also provide support to internal projects by assisting and coordinating internal circulations to ensure staff in different divisions have a chance to review and provide their expertise

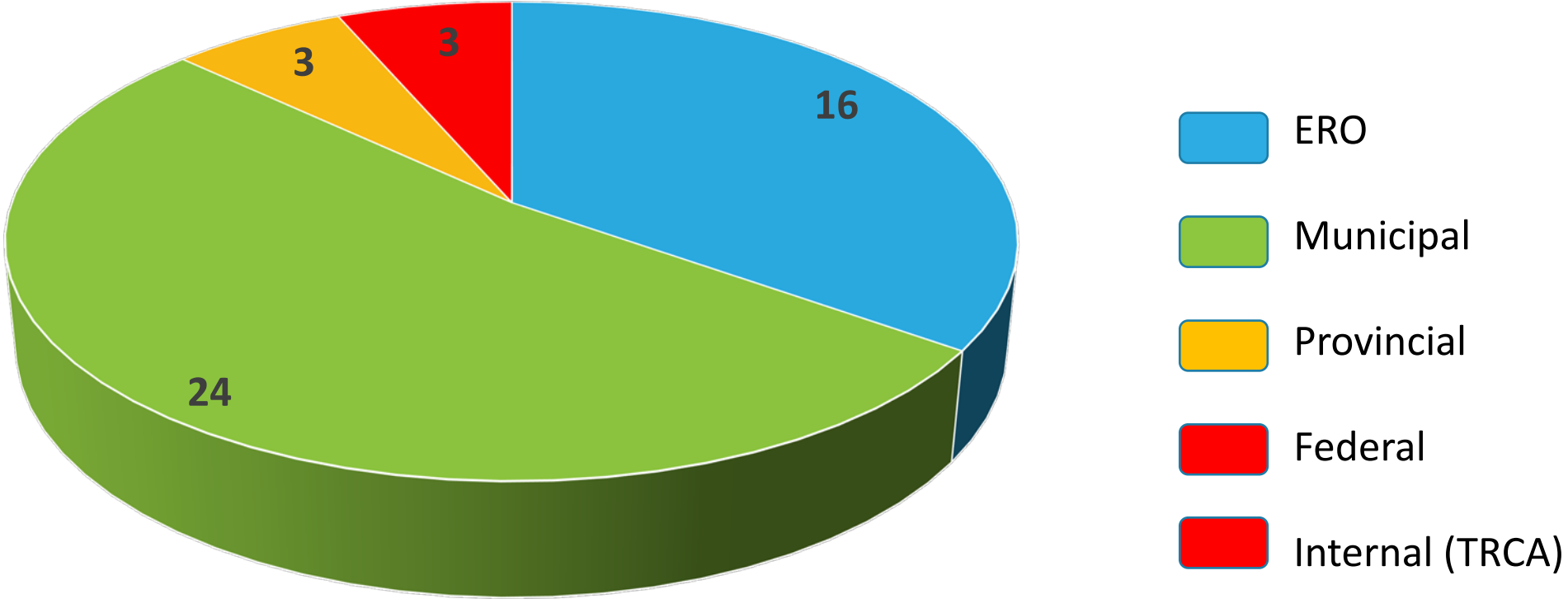


In addition to assisting with circulations, rationale and positioning, PPR staff ensure the materials are set within the context of TRCA planning policies, regulation and procedures



Examples include: TRCA's Seed Mix Guidelines, Field Staking Protocol, SWM Criteria, Ecosystem Compensation Guideline, Water Balance Guidelines

Policy Projects & Consultation Submissions (Jan-Oct 2022)



Total Submissions = 46

Doesn't include day-to-day consultation

Circulation & Review



Teams circulation

Circulations are typically posted in a Teams page shortly after PPR receives them from the municipality or notices a relevant posting on the ERO.



Teams post/chat

Posted in Teams is a summary of what's proposed, materials to review, how to provide comments and the internal commenting due date are.



Read instructions

Direction may be to comment directly in proposal document, a commenting table, or via email. Expedited reviews may require staff to respond to PPR drafted letter.



Ask questions / Attend session

If in doubt, please reach out to PPR staff for more information. Large consultations may see PPR conduct a "working session" to explain the proposal and gather preliminary feedback.



Be mindful of deadlines

Internal due dates are driven by the municipality's Council approval processes and the Province's commenting periods. Provincial Bills often move quickly through the approval process and leave little time for review.



Formulating Comment Submissions

TRCA's submissions integrate multi- and interdisciplinary perspectives of staff expertise, e.g., planning, ecology, water resources engineering, geotechnical engineering, hydrogeology, source water protection, ecological restoration, ecosystem and climate change science, property issues, etc.

Alignment with corporate strategic priorities and objectives; being mindful of and/or referencing previous TRCA submissions; strive for consistency to synergize/build on what's been said before, on CO and municipal partner submissions, and avoid conflicts with these

Informed by staff experience in their day-to-day work with municipalities, the development industry, infrastructure providers, landowners and other stakeholders and emphasize shared provincial, municipal and TRCA objectives and priorities

Commenting 101 / Tips for Commenting



- 1) Be cognizant of audience - (CO vs. MMAH vs. MECP/MNRF vs. a municipality) and the motivation for the proposed changes
- 2) Pay attention to context, scale, scope of proposal – the right studies at the right time
- 3) Stay organized – use commenting table where applicable and use bullets or short paragraphs organized by topic or theme
- 4) Avoid using jargon to extent possible, use plain terms where feasible
- 5) Use examples of projects/files where your issue was raised and how it was addressed; discuss how the issue could have been avoided as it relates to the proposal at hand
- 6) Outcome based – what is that you're looking for?

Commenting challenges

- Workload - we know you're busy (heads up; delegate; scope)
- No perfect comments – it's our job to coordinate, help facilitate and reconcile conflicts, synthesize arguments and collaborate to draft recommendations
- What else can we do to help you?



To view our submissions



Board of Directors Meeting
Agenda

Reports to the TRCA Board of Directors:

- Summary of Policy Consultations ([September 2021](#))
- Summary of Policy Consultations ([June 2022](#))
- Update on MCRs ([November 2021](#))

Staff Hub

- A list of TRCA submissions is on the Staff Hub at "[Policy Consultation Submissions](#)"



Upcoming Board Reports – Feb 2023

- Update on Municipal Comprehensive Reviews and OP and ZBL Reviews



Teams Pages

- Final submissions on municipal consultations posted with note of thanks

TRCA Policy Planning Staff Contacts

Laurie Nelson
Director, Policy Planning
laurie.nelson@trca.ca

Jeff Thompson
Senior Planner, Policy
jeff.thompson@trca.ca

Vacant
Planner, Policy

Mary-Ann Burns
Senior Manager,
Provincial and Regional
Policy
maryann.burns@trca.ca

Erin McGregor
Planner I, Policy
erin.mcgregor@trca.ca

Admin Support (PPR,
PE and E&C):
Cindy Barr
Cindy.barr@trca.ca

Thank you for your time.

Questions and feedback on our
processes are welcome!



Upcoming ECS Lunch and Learns!

Wednesday, November 9
11:00am-12:00pm

Planning Ecology (Pt. 1)

By Brad Stephens
and the PE team

Tuesday, November 15
11:00am-12:00pm

Updated Strategic Plan (2023-2034)

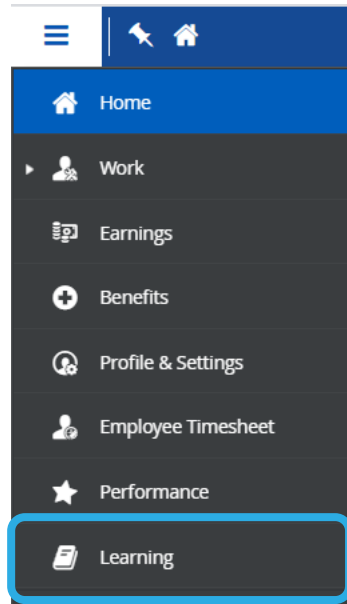
By Jen Moravek
and Melissa Rosato


Friday, December 2
11:00am-12:00pm

Planning Ecology (Pt. 2)

By Brad Stephens
and the PE team

Learning Management System



 Course Catalog

CATEGORIES


FILTERS

Lunch and Learn

X

Q

4 items




New

Lunch and Learn: Teams, OneDrive and SharePoint

EN

Webinar




New

Lunch and Learn: Hobbies for Mental and Physical Health (Please read...

EN

ILT (Instructor-Led Training)




New

Lunch and Learn: Thermal Imaging for Restoration and Conservation

ENROLLED
EN

Webinar



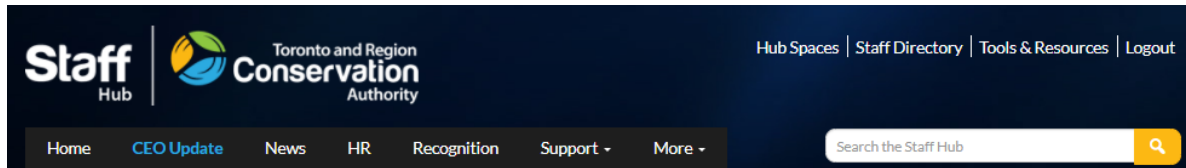
New

Lunch and Learn: Natural Heritage System Update

ENROLLED
EN

Webinar

Scientific Knowledge Sharing Hub



[Home](#) > Scientific Knowledge Sharing

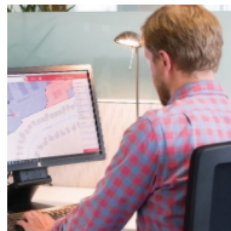
Scientific Knowledge Sharing

Evidence-based decision making is at the core of what TRCA does. Several of our Business Units engage in generating new scientific knowledge to support watershed management actions and decisions.

It is critical that the knowledge generated is effectively shared.

The Scientific Knowledge Sharing platform is dedicated to sharing the latest scientific knowledge generated by TRCA and our partners. It is a place where staff can learn about and engage in the scientific work TRCA is undertaking.

PLEASE NOTE: There are several TRCA teams engaged in generating new scientific knowledge. Currently the content on the platform is specific to the Watershed Planning and Ecosystem Science business unit. Additional content from other TRCA teams will be added as the platform develops.



Knowledge Sharing: Learn More

- [Watershed and Ecosystems Reporting Hub](#)
- [Environmental Monitoring](#)
- [Research and Science Working Group](#)
- [TRCA Research Agenda](#)
- [Development and Engineering Services Hub Space](#)

[SUBMIT A RESOURCE](#)

[GET E-MAIL UPDATES](#)

....

Knowledge Sharing: Latest Updates

[Knowledge Sharing – Climate Change Analysis at the Local Scale](#)

April 19, 2021 by Hub Admin [Featured](#)

....

EXPLORE THE RESOURCE LIBRARY

[Newsletters](#) +

[Open Data & Information](#) +

[Plans and Strategies](#) +

[Presentations to Partners](#) +

[Reports and Technical Papers](#) +

[Scientific Papers](#) +

[Technical Protocols & Best Practices](#) +

[Videos](#) +

[Webinars and Lunch & Learns](#) +

The collage consists of 25 individual presentation slides, each with a unique design and content. The slides are arranged in a grid-like fashion, with some overlapping. Each slide typically includes a title, a presenter's name, and a date. The topics are diverse, ranging from environmental science and conservation to urban planning and community engagement. The slides are presented in a way that highlights the variety of work and events conducted by TRCA and its partners.



Thank you

For questions about the ECS Lunch and Learn Series, please contact:

Sharon Lam
sharon.lam@trca.ca