

# Staff Recognition

## Resource Management Projects

August 24, 2020

# Restoration and Infrastructure (R&I): Construction Services (CS)

## Resource Management Projects (RMP)

### 20 Staff Members:

- Ted Elmhirst (Supervisor)
- Adrian Pressacco (Project Manager)
- Christina Enger, Eric Smith & Matt Andersen (Site Supervisors)
- Valerie Schuller (Project Assistant)
- Colton Leuchter, Greg Gaudet & Jayden Stead (Lead Hands)
- Evan Kent, Kevin Kosar, Matt Dodds, Nicholas Madden, Sean Learney & Trevor Hill (Crew Leaders)
- Darren Tree, Kevin Marino, Matthew Palmieri, Sarah Hines & Serena Brown (Field Staff)

# RMP: Two Streams, One Team

## Conservation Lands

- Property Maintenance and Cleanup
- Trail Alignment Mowing, Clearing and Maintenance
- Boardwalks, Kiosks, Waystations, Interpretive Signage, Seating, Fencing, Bollards and other Site Furniture



## Construction

- Multi-use trails: natural, amended soil, granular and hard surface treads
- Lookouts and Parking Lots
- Grading and Drainage Improvements
- Bridges and Retaining Walls
- Site Restoration and Improvement



# Don Mills Trail

The Don Mills Access Trail Project provides the Flemington Park and Thorncliffe Park community with a formalized access trail connected to the Lower Don Trail system by upgrading and replacing a well-used informal path.

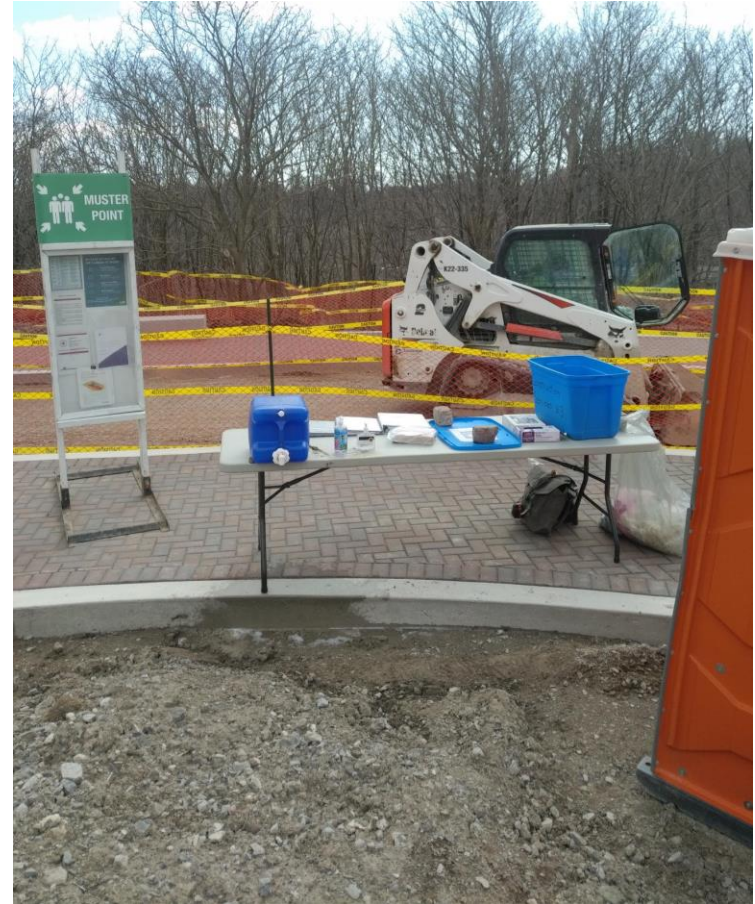
The need for the Don Mills Access Trail Project was identified by City staff through several years of community consultation, which highlighted the importance of improved access to the nearby green spaces.

The project includes construction of a 330m long by 3-4m wide multi-use asphalt trail, 7 resting areas with benches and installation of custom art work.



# Don Mills Trail

Staff: Eric Smith, Colton Leuchter, Matthew Palmieri, Nicholas Madden



Cleaning procedures for Covid-19



# Don Mills Trail



Subgrade Preparation



Restoration: Raking and Seeding



# Don Mills Trail



Before



After

# Cottonwood Flats Improvements

The goal of the project was to provide a long-term recreational experience that ensures accessibility for people of all levels of mobility in a naturalized wetland, woodlot and wet meadow setting.

RMP implemented trail improvements and re-alignment with a lookout node adjacent to the Don River. The project includes drainage, habitat and hydrological improvements, riverbank stabilization and significant riparian plantings.

Environmental benefits include an increase in natural habitat and cover for aquatic and terrestrial animals, and improvements to water quality through the collection and treatment of surface runoff and increased groundwater recharge through infiltration.



# Cottonwood Flats Improvements

The Cottonwood Flats area has been used for many applications in the past 80 years, such as: a City snow dump (1962-2009), Manufacturing (1940's) and a Paving works/storage yard (1950's).

- These activities left behind impacted materials that TRCA has begun cleaning up in conjunction with the wetland project
- Over 200 large concrete slabs and hundreds of trucks of impacted soil were removed from site



Concrete Removal



Impacted Soil removal

# Cottonwood Flats Improvements

Staff: Matt Andersen, Greg Gaudet, Trevor Hill, Evan Kent, Matt Dodds, Sean Learney, Sarah Hines



Creating and Shaping the Wetland Feature



# Cottonwood Flats Improvements



Before

After



# Claireville North Inter-Regional Trail

Claireville Conservation Area (CCA) is one of the most accessible TRCA properties available for public use, but lacks a formal trail infrastructure to facilitate connections from neighbouring residential communities to the municipalities of Toronto, Brampton, Mississauga and Vaughan.

The Claireville North Inter-Regional Trail Project intends to fill this need with a formal north-south multi-use trail that is 3.4 km long. This trail will include 2 large bridge crossings over the Humber River.

CCA is also an integral part of Brampton's natural heritage system offering cultural heritage, educational and recreation destinations.

The inter-regional trail system is supported in the Claireville Conservation Area Management Plan Update (2012) as well as the City of Brampton's PathWays Master Plan (2002).

# Claireville North Inter-Regional Trail

Staff: Christina Enger, Colton Leuchter, Jayden Stead, Matthew Palmieri, Evan Kent



Subgrade Preparation



Granular Base Installation



# Claireville North Inter-Regional Trail



Before



After



# Claireville North Inter-Regional Trail

TRCA staff installed 350 m of farm fence to deter unauthorized use the trail



Fencing to separate leased land from multi-use trail

# Whitehead-Palgrave Trail

This project formalized an existing trail network in Palgrave to commemorate former community champion Richard Whitehead. Richard Whitehead left behind a legacy of municipal politics with over 25 years on Caledon's Town Council. He was an active board member of the TRCA and worked with the Palgrave Rotary.

Councillor Jennifer Innis has championed the initiation of a formal trail to connect the Community Centre to the Palgrave Mill Pond Property and the Caledon Trailway.

The project was developed in partnership with the Town of Caledon, TRCA Authority Board Chair Councillor Innis and with endorsement by TRCA, the Rotary Club of Palgrave, Caledon Town Council and the Whitehead Family.



# Whitehead-Palgrave Trail

The phased project included construction of the 400 m long Richard Whitehead trail and the 100 m long Lookout trail with a fishing node overlooking the Palgrave Mill Pond. The Lookout trail replaced an informal footpath with a dilapidated dock structure and improved in-water fish habitat.



Richard Whitehead Trail



Lookout Trail



# Whitehead-Palgrave Trail

Staff: Christina Enger, Eric Smith, Matt Dodds, Sean Learney, Sarah Hines, Colton Leuchter, Jayden Stead



Culvert Installation



Finished trail with resting area  
and deer fenced restoration planting



# Whitehead-Palgrave Trail



Post and Paddle Fence Installation





# Whitehead-Palgrave Trail

Replacement of the dilapidated dock with a seating node overlooking the Palgrave Mill Pond



Before



After



# Chorley Park: Natural Surface Trail

The purpose of the Chorley Park Natural Surface Trail was to provide a natural surface trail option for the community members, providing a link between Chorley Park and the Don Valley Brickworks and the Beltline Trail. This project also removed existing hazards and improved the trail user experience.

The Lands and Trails group was approached by The City of Toronto to create a natural surface trail at Chorley Park. It was identified in the consultation for the large switchback project that a natural surface trail was desired.

The trail improvements include: re-alignment to reduce extreme grades, asphalt removal to allow restoration and regeneration, removal of a staircase for slope restoration and installation of a lookout point.

Special care was taken to minimize tree impacts and disturbance in the natural area, particularly to the butternut trees along the trail alignment.

# Chorley Park: Natural Surface Trail

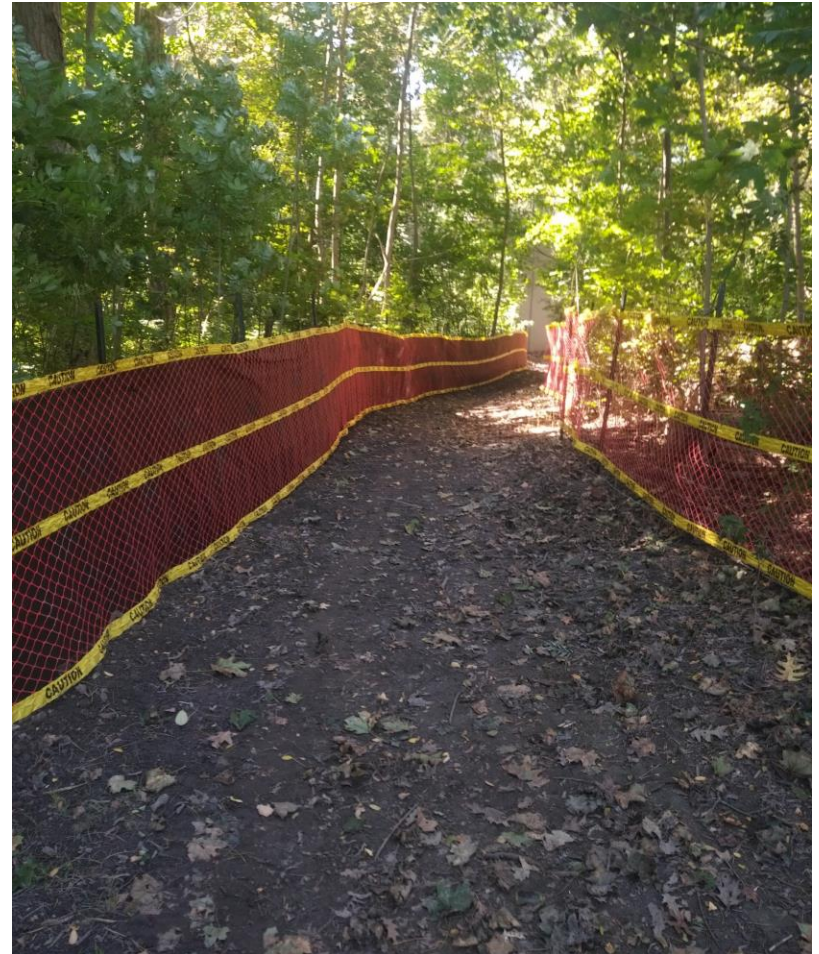
Staff: Eric Smith, Kevin Kosar, Matt Dodds, Trevor Hill, Sean Learney, Sarah Hines, Nicholas Madden



Decommissioning and restoration of a 43m wooden inground staircase



# Chorley Park: Natural Surface Trail



Removal and restoration of 200m of old asphalt trail in the woodlot



# Chorley Park: Natural Surface Trail



Formalization of 380m of natural surface trail and connection to the AODA compliant Chorley switchback trail



# Humber Arboretum Switchback Trail

Work was completed in summer 2020 on a 200 m long granular trail providing a safer, more accessible and sustainable connection from the Humber Arboretum and Humber College on the tableland to the West Humber Recreational Trail in the valley.



Staff: Matt Andersen, Jayden Stead, Colton Leuchter, Evan Kent, Kevin Marino, Matthew Palmieri



# Black Creek Trail at Shoreham

Work was completed in 2020 on a 130 m long asphalt trail with maximum 10% grade, retaining structures, minor slope grading and improvements to stormwater management.



Staff: Matt Andersen, Greg Gaudet, Kevin Kosar, Matt Dodds, Sean Learney, Sarah Hines



# Albion Spine Trail and Grading Improvements

As part of priority implementation of the Albion Hills Master Plan, staff constructed a 300m section of the granular 'Riverview Trail' including several armourstone seating nodes and regraded and seeded 1.3ha of open space which will provide the main programming and event space for the park.



Staff: Christina Enger, Eric Smith, Greg Gaudet, Jayden Stead, Colton Leuchter, Trevor Hill, Matthew Palmieri, Darren Tree

# Mud Creek Inlet

The objective of this project was to replace a failed culvert in order re-establish base flow to the Don Valley Brick Works wetlands and to provide a safe recreational trail connection. The failed culvert was originally intended to draw flow from Mud Creek into the wetlands but it was no longer functional and was blocked with sediment.

TRCA and the City of Toronto developed a plan to re-establish manageable base flow into the wetlands and allow for ongoing sediment clean out and management to ensure long term viability.

At the base of the slope, an informal, unsafe footpath meandered along the wetland edge through the flow path of the old culvert. The construction of an elevated boardwalk pathway now provides safe and formal access to this area of the wetlands. The new boardwalk connects with the existing DVBW trail system and minimizes the impact by park visitors on the wetlands.



# Mud Creek Inlet



Outlet with waterfall feature



Elevated Boardwalk

# Nashville-Kirby Multi-Use Trail

The Nashville Conservation Reserve Multi-Use Trail Project is intended to improve trail conditions, grading and accessibility to inter-regional trail systems. The 1.3 km accessible trail will connect two sections of Kirby Road which are currently bisected by the Humber River. The project will be implemented in 3 phases.

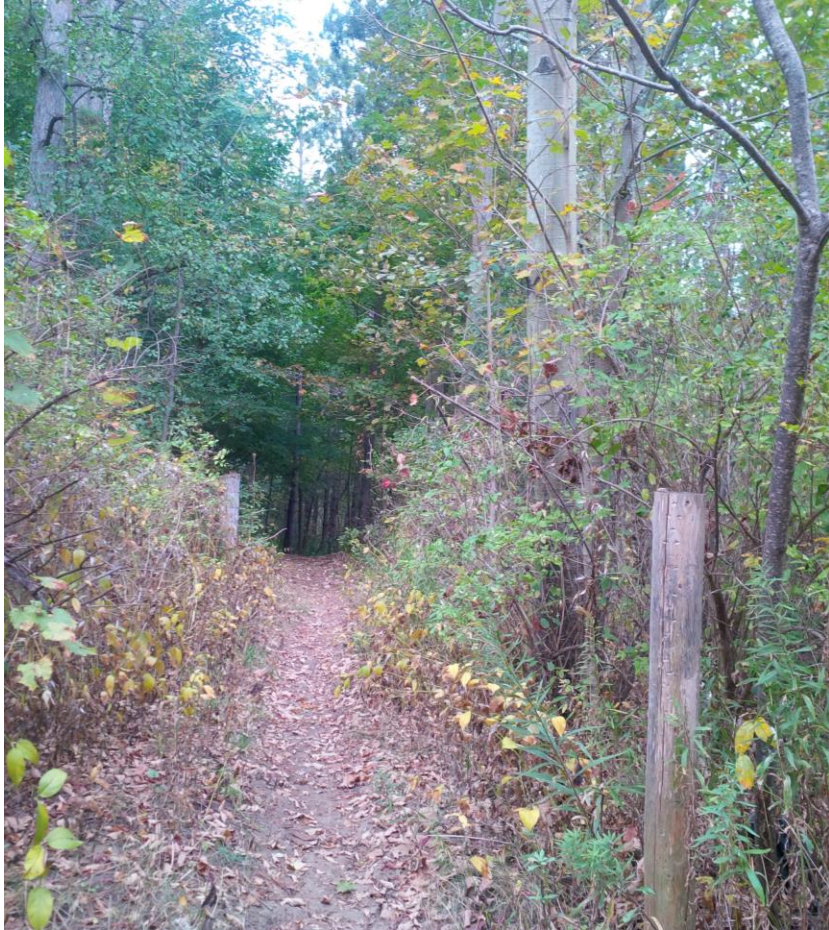
TRCA's Watershed Strategies group prepared the Nashville Conservation Reserve Management Plan which guides the future use of the property.

The first priority in trail implementation will be the Kirby road allowance which spans the Nashville Conservation Reserve property between Huntington Rd and Hwy 27. This section of Kirby Rd was closed in the 1990's due to serious erosion along the outer meander of the Humber River which undermined the road.

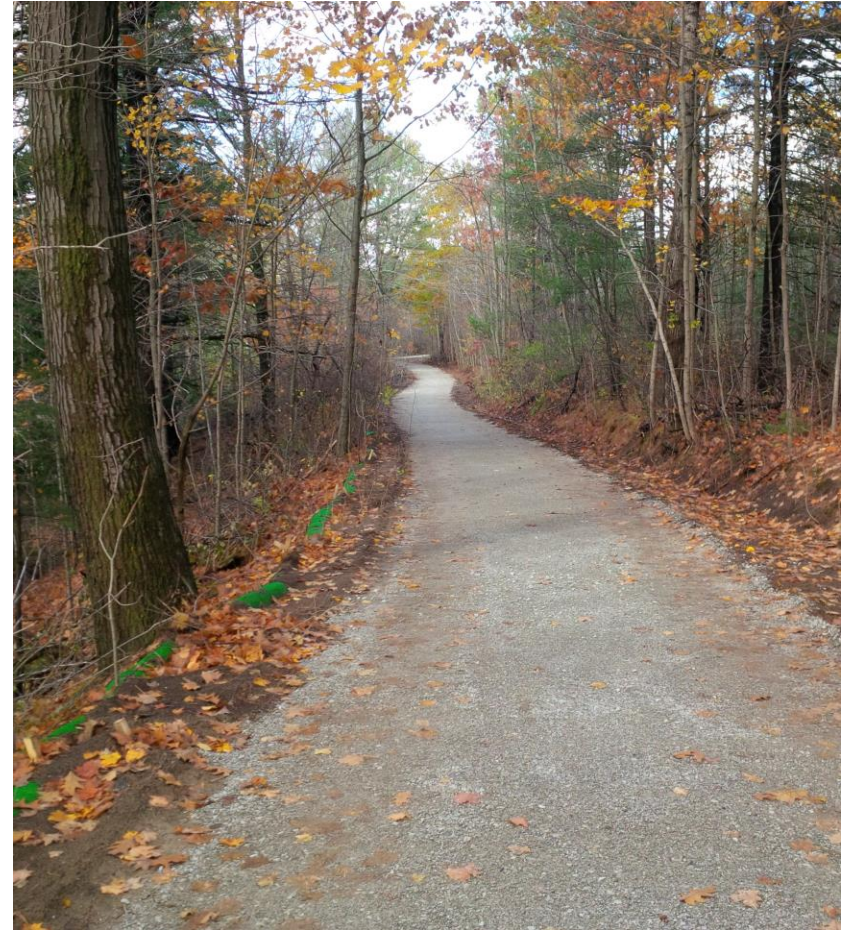


# Nashville-Kirby Multi-Use Trail

Phase 1: 600 m of granular trail along a well-used informal trail on the tableland.



Before



After



# Nashville-Kirby Multi-Use Trail

Phase 2: A 400 m long accessible granular trail will be constructed using switchbacks and retaining walls as a realignment of the steep and narrow existing foot trail that descends into the valley. Work commenced in early August.



Cutting and harvesting trees to clear the area for trail construction



# Other Current Initiatives

- Nicholas Madden has been responsible for trail maintenance and clearing on active TRCA managed trails since April
- Kevin Kosar and Serena Brown are providing maintenance support to the Flood Infrastructure and Hydrometrics team since July
- Bestview Park Trail and Bolton Resource Management Tract North Trail are amended surface trail improvement projects with implementation commencing in August

# Project Supervision and Support

Staff: Adrian Pressacco and Valerie Schuller

Often behind the scenes, their responsibilities include but are not limited to safety planning, design review, resource and staff assignment, procurement, scheduling, QC and site inspections, and comprehensive oversight and support for all staff on the team and for every project.







[www.trca.ca](http://www.trca.ca)